

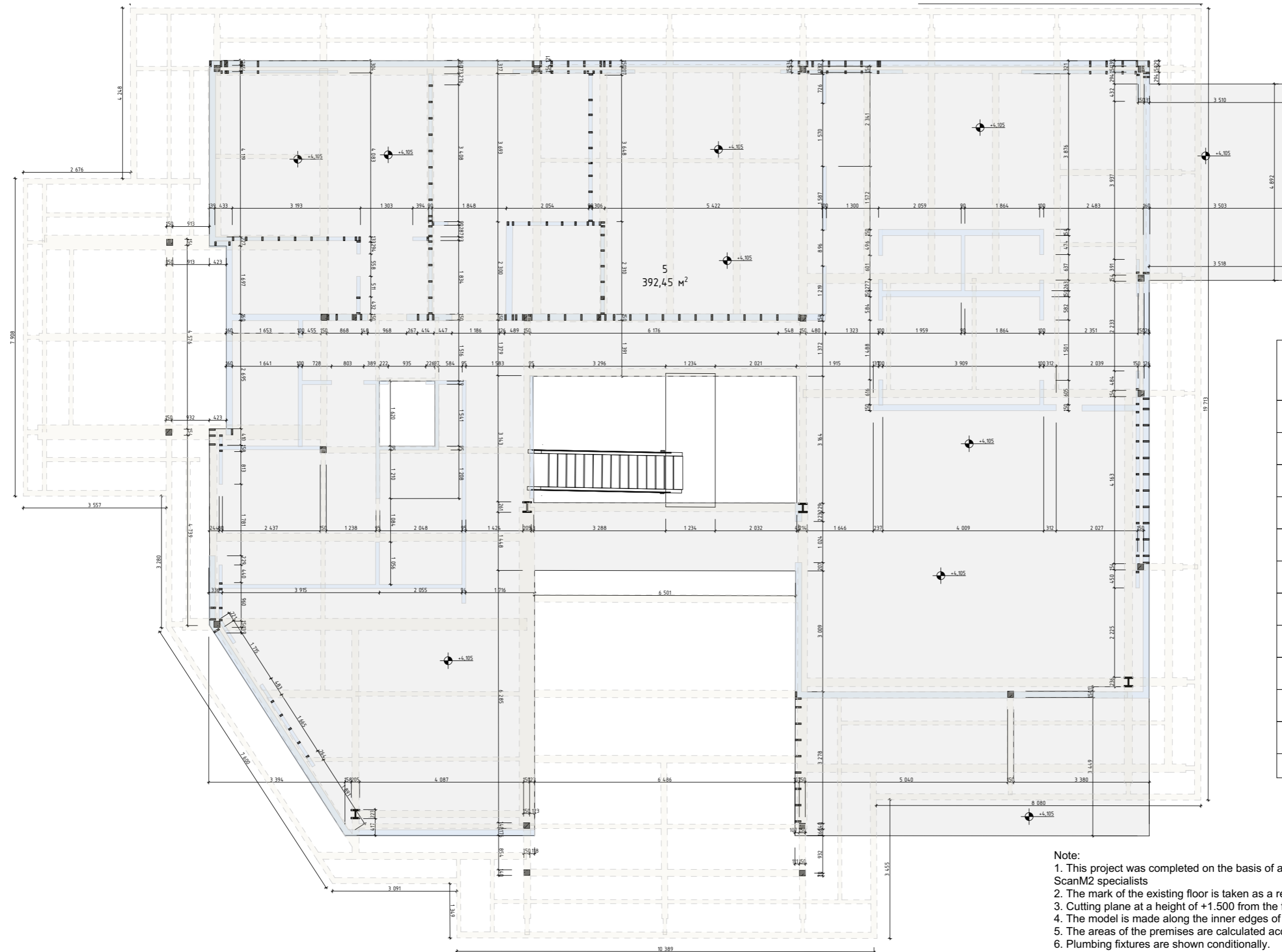
List of premises

Nº	Name	Area (m2)
1		446,83
2		27,96
3		8,80
4		152,61
5		392,45
6		287,28
7		17,66
8		51,44
9		323,77
10		613,15
11		196,69
		2 518,64 ml

Note:

1. This project was completed on the basis of a full-scale measurement made on __.2023. ScanM2 specialists
2. The mark of the existing floor is taken as a relative mark of ± 0.000 .
3. Cutting plane at a height of +1.500 from the floor level.
4. The model is made along the inner edges of the wall.
5. The areas of the premises are calculated according to the internal finishing surface of the walls.
6. Plumbing fixtures are shown conditionally.
7. The purpose of the pipelines has not been established.
8. If there is a lack of a linear dimension, put it down manually.

Lawrence	Sheet	Sheets
	1	
1st floor plan		SCANM²



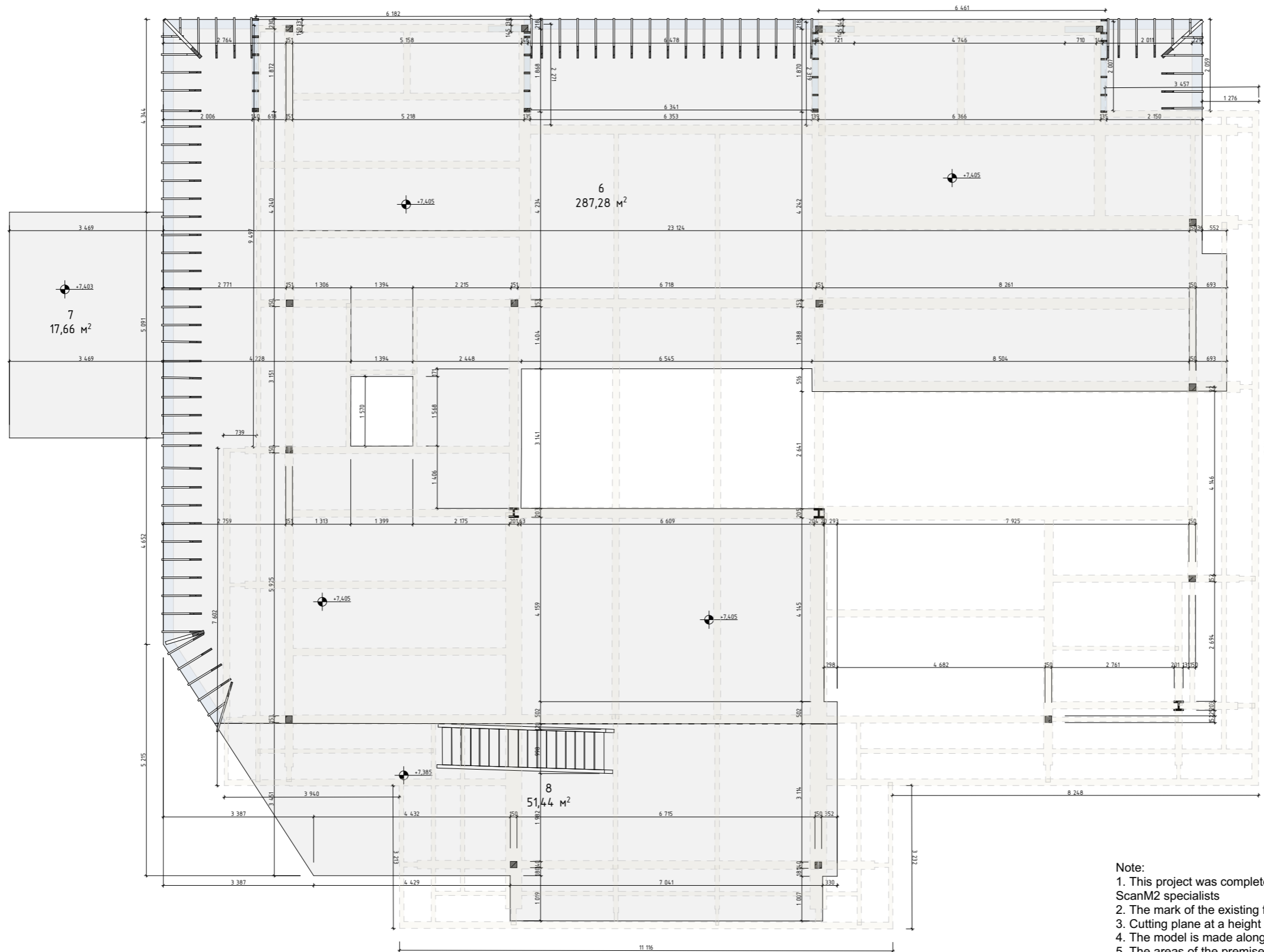
List of premises

Nº	Name	Area (m2)
1		446,83
2		27,96
3		8,80
4		152,61
5		392,45
6		287,28
7		17,66
8		51,44
9		323,77
10		613,15
11		196,69
		2 518,64 MI

Note:

1. This project was completed on the basis of a full-scale measurement made on __.2023. ScanM2 specialists
2. The mark of the existing floor is taken as a relative mark of ±0.000.
3. Cutting plane at a height of +1.500 from the floor level.
4. The model is made along the inner edges of the wall.
5. The areas of the premises are calculated according to the internal finishing surface of the walls. Plumbing fixtures are shown conditionally.
6. The purpose of the pipelines has not been established.
7. The purpose of the pipelines has not been established.
8. If there is a lack of a linear dimension, put it down manually.

Lawrence	Sheet	Sheets
	2	
2nd floor plan		SCANM²



List of premises

Nº	Name	Area (m2)
1		446,83
2		27,96
3		8,80
4		152,61
5		392,45
6		287,28
7		17,66
8		51,44
9		323,77
10		613,15
11		196,69
		2 518,64 ml

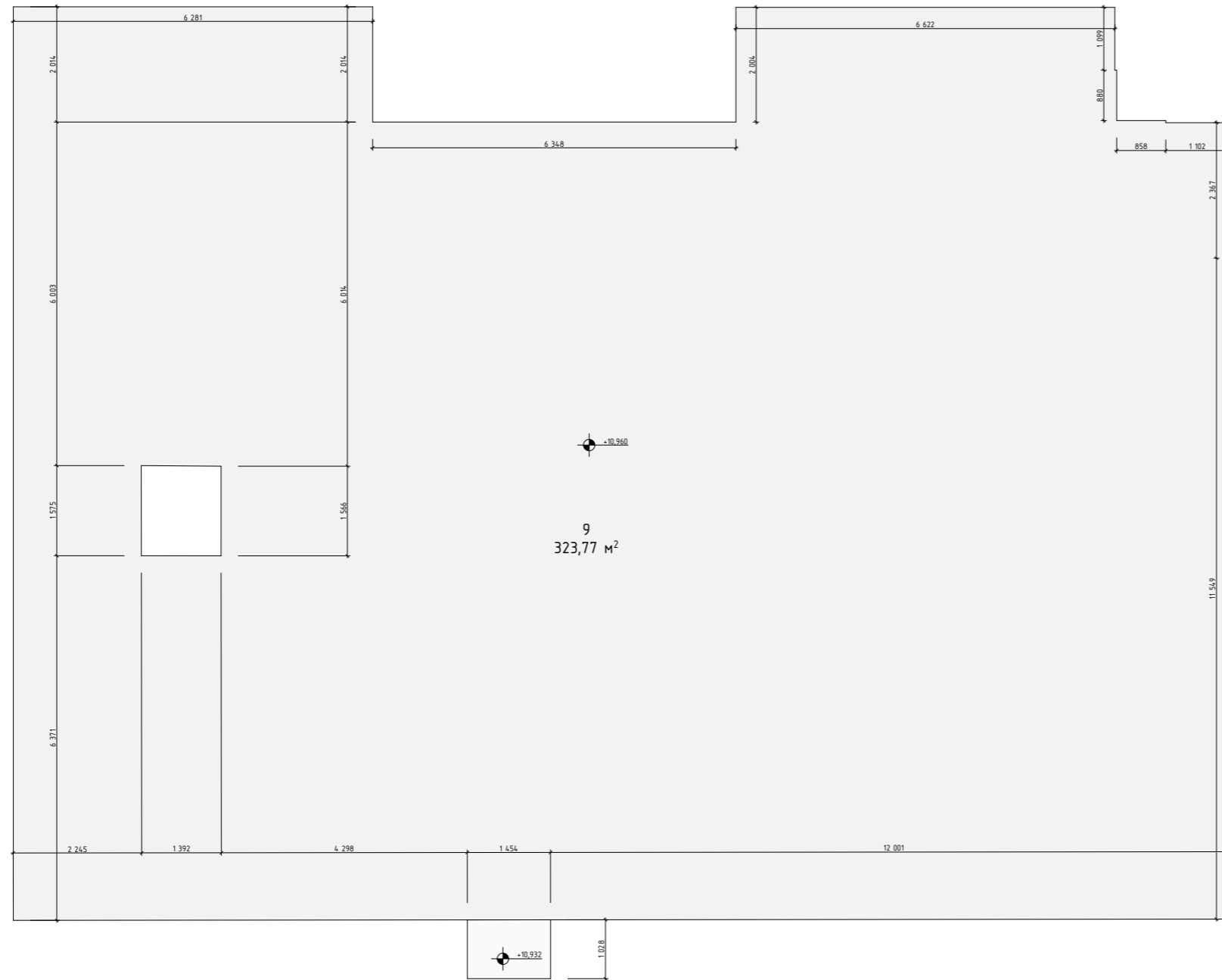
Note:

1. This project was completed on the basis of a full-scale measurement made on __.2023. ScanM2 specialists
2. The mark of the existing floor is taken as a relative mark of ±0.000.
3. Cutting plane at a height of +1.500 from the floor level.
4. The model is made along the inner edges of the wall.
5. The areas of the premises are calculated according to the internal finishing surface of the walls. Plumbing fixtures are shown conditionally.
6. Plumbing fixtures are shown conditionally.
7. The purpose of the pipelines has not been established.
8. If there is a lack of a linear dimension, put it down manually.

Lawrence	Sheet	Sheets
	3	
3rd floor plan		SCANM²

4th floor plan.

1:100



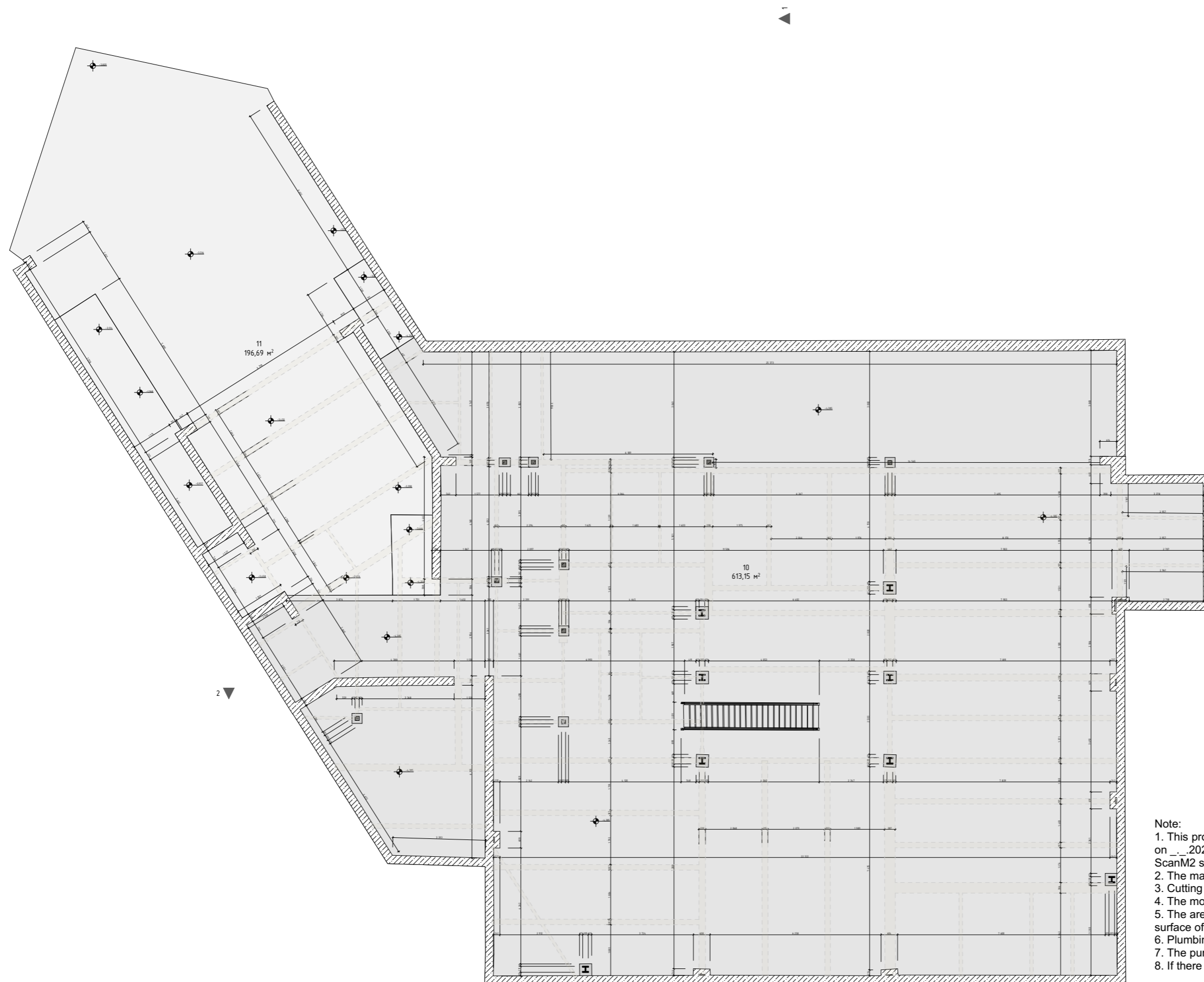
List of premises

Nº	Name	Area (m2)
1		446,83
2		27,96
3		8,80
4		152,61
5		392,45
6		287,28
7		17,66
8		51,44
9		323,77
10		613,15
11		196,69
		2 518,64 ml

Note:

1. This project was completed on the basis of a full-scale measurement made on __.2023. ScanM2 specialists
2. The mark of the existing floor is taken as a relative mark of ±0.000.
3. Cutting plane at a height of +1.500 from the floor level.
4. The model is made along the inner edges of the wall.
5. The areas of the premises are calculated according to the internal finishing surface of the walls.
6. Plumbing fixtures are shown conditionally.
7. The purpose of the pipelines has not been established.
8. If there is a lack of a linear dimension, put it down manually.

Lawrence	Sheet	Sheets
	4	
4th floor plan		SCANM²



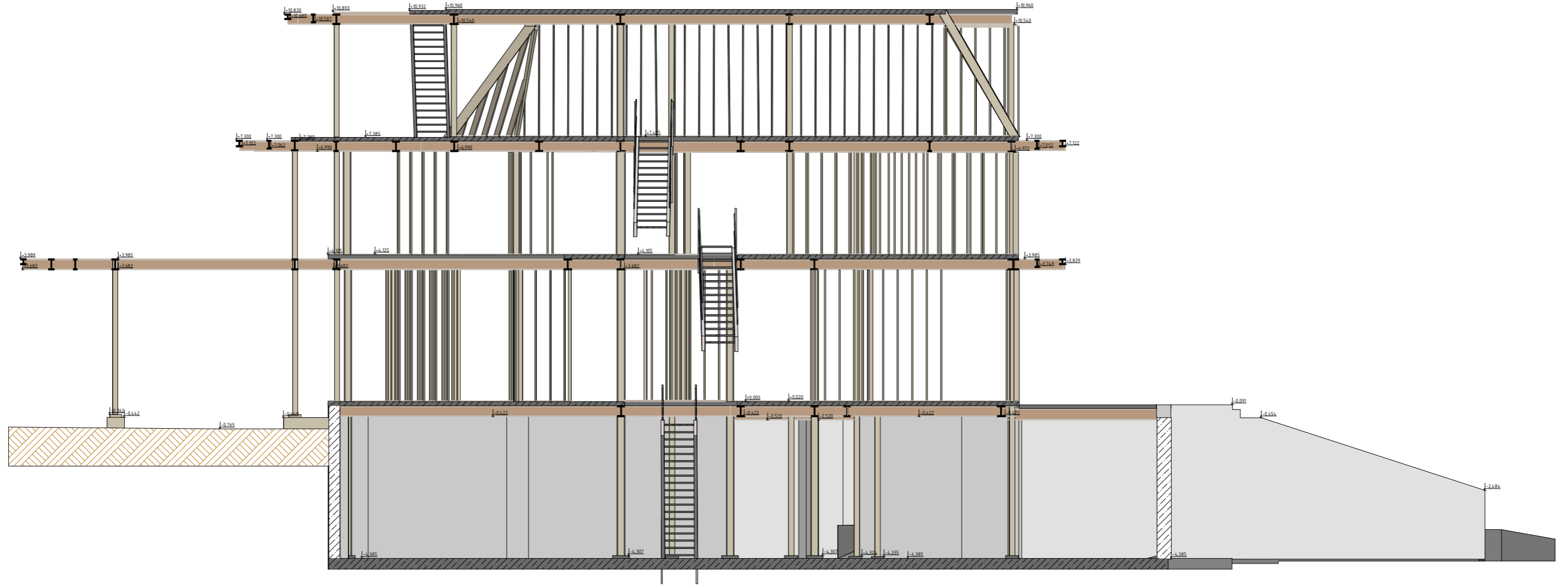
List of premises

Nº	Name	Area (m2)
1		446,83
2		27,96
3		8,80
4		152,61
5		392,45
6		287,28
7		17,66
8		51,44
9		323,77
10		613,15
11		196,69
		2 518,64 m ²

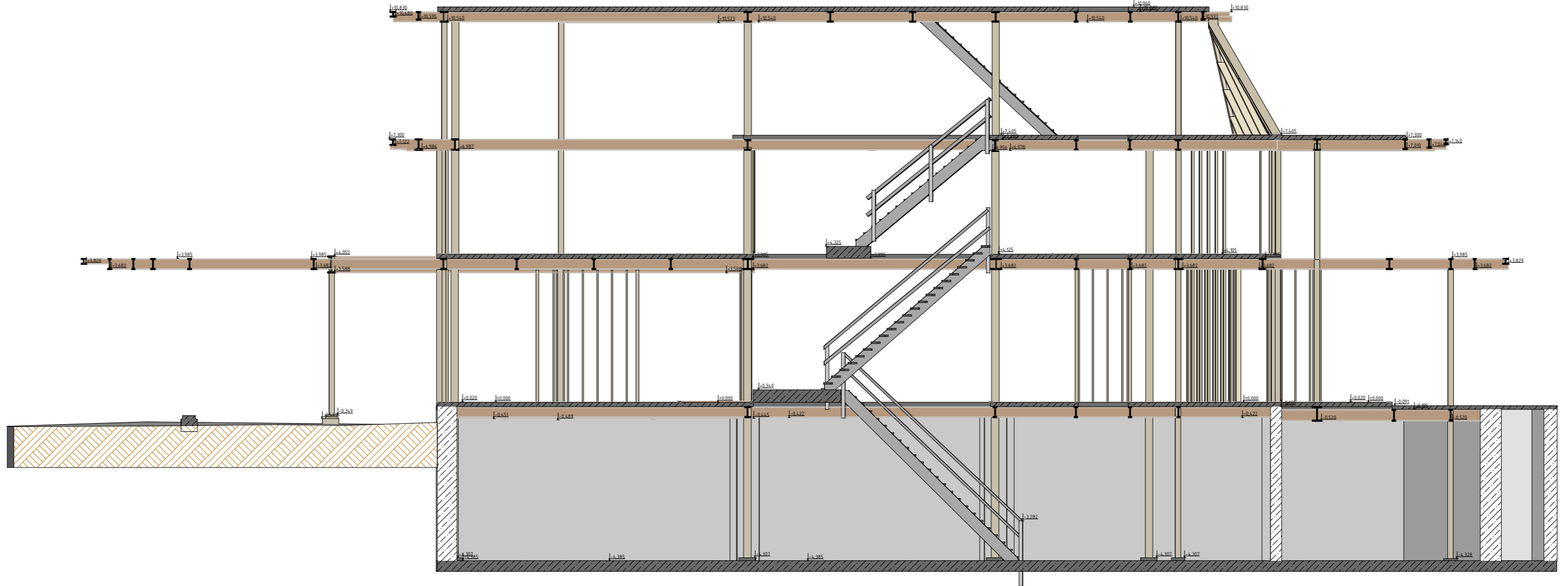
Note:

1. This project was completed on the basis of a full-scale measurement made on __.2023.
2. The mark of the existing floor is taken as a relative mark of ±0.000.
3. Cutting plane at a height of +1.500 from the floor level.
4. The model is made along the inner edges of the wall.
5. The areas of the premises are calculated according to the internal finishing surface of the walls.
6. Plumbing fixtures are shown conditionally.
7. The purpose of the pipelines has not been established.
8. If there is a lack of a linear dimension, put it down manually.

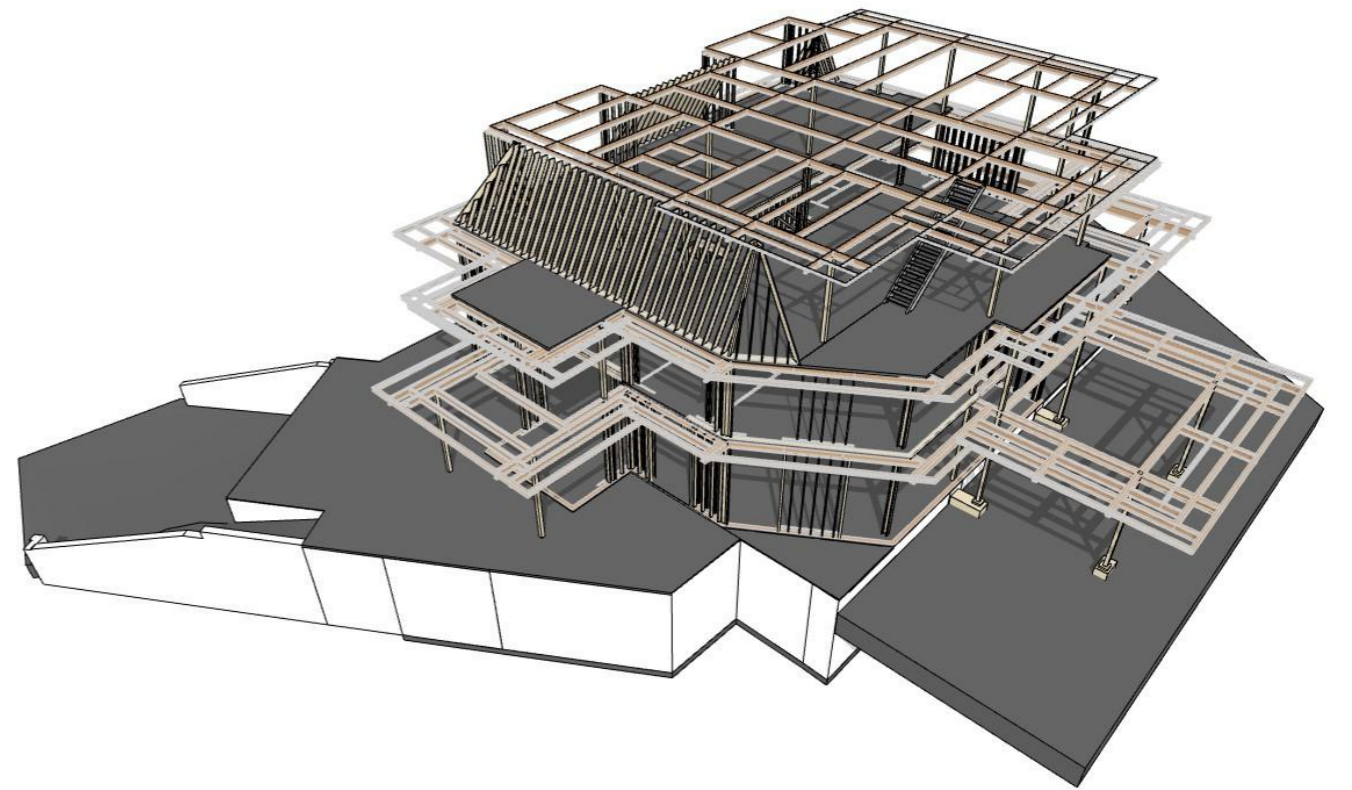
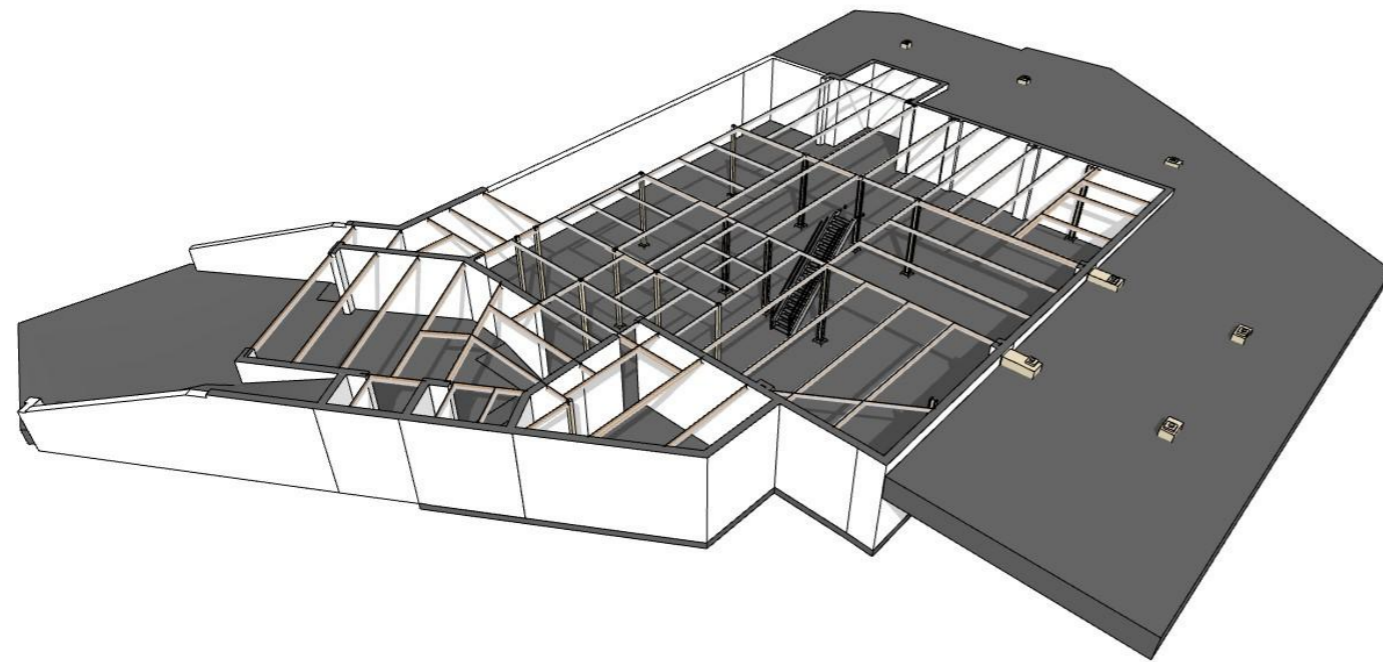
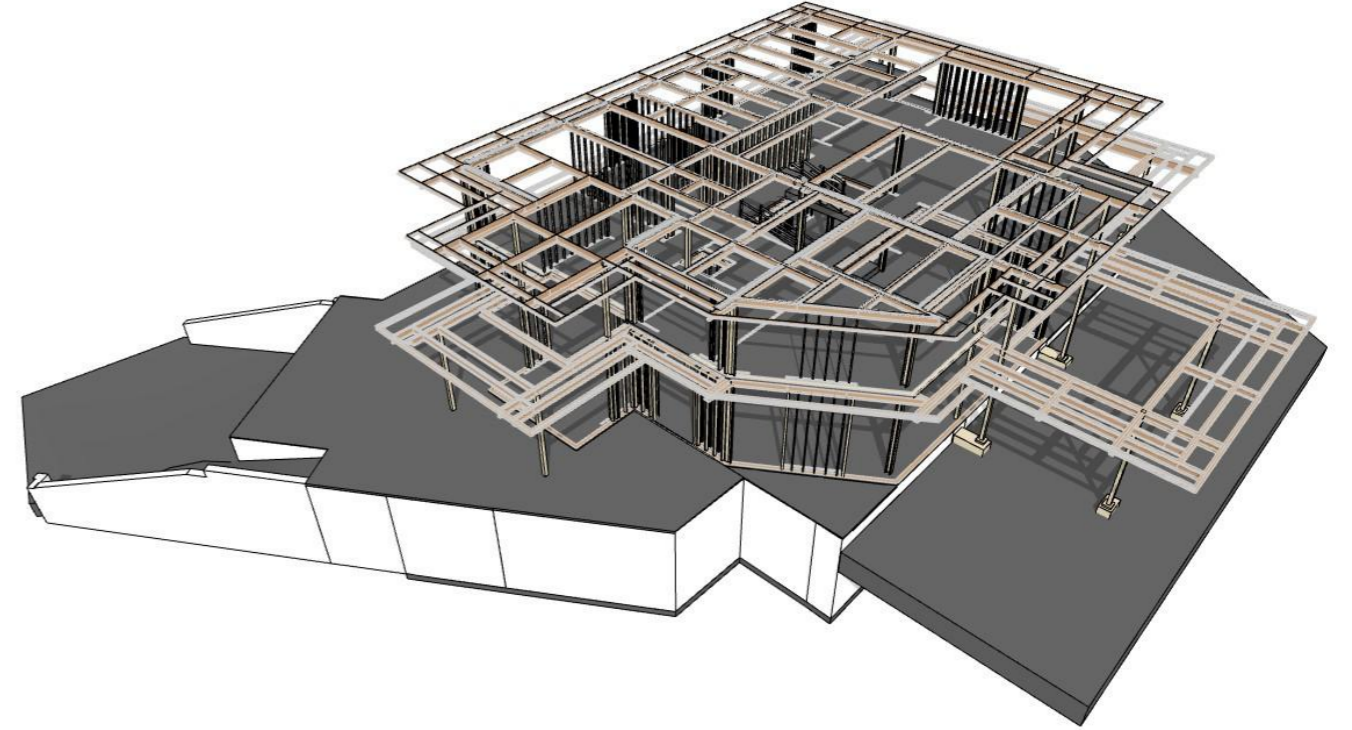
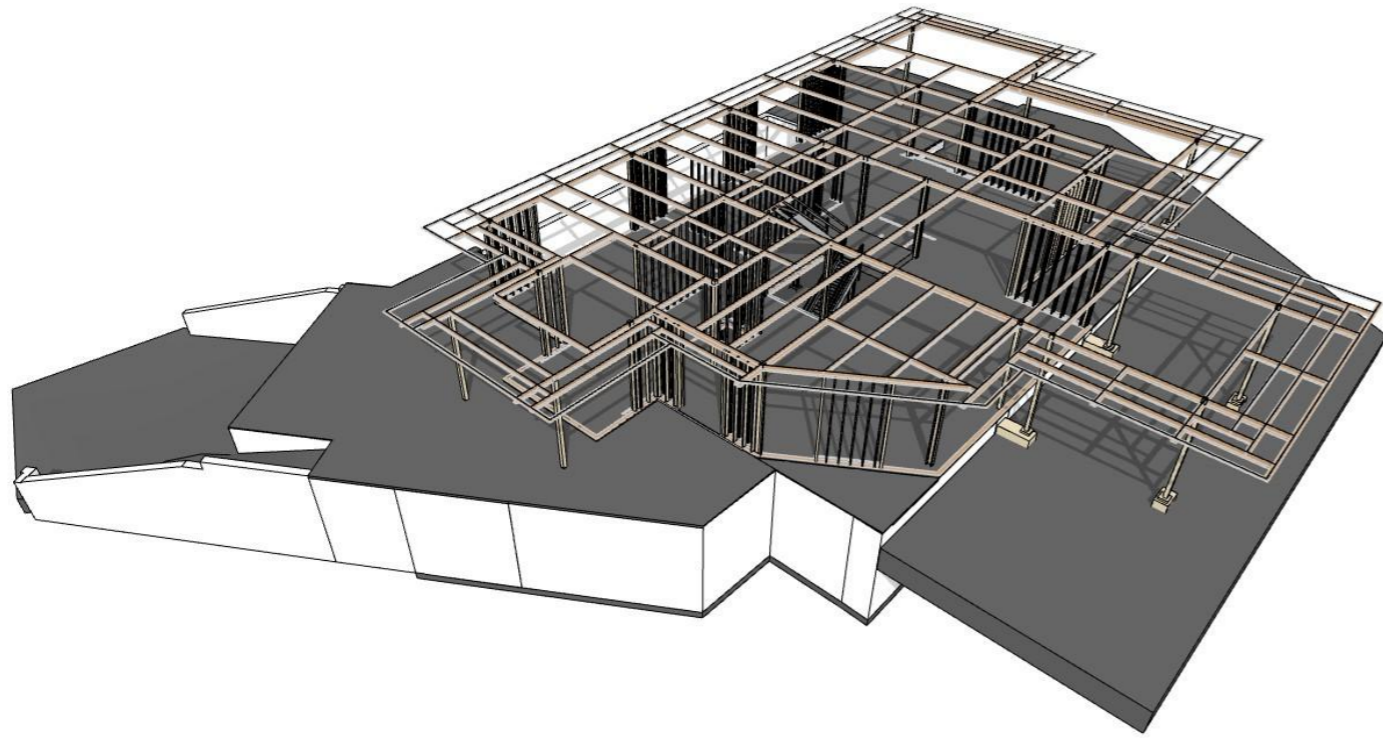
Lawrence	Sheet	Sheets
	5	
Underground floor plan	SCANM²	



Lawrence	Sheet	Sheets
	6	
Section 1-1	SCANM²	



Lawrence	Sheet	Sheets
	7	
Section 2-2	SCANM²	



Lawrence	Sheet	Sheets
	8	
3D	SCANM²	